

UV BOOTH

UV Inspection

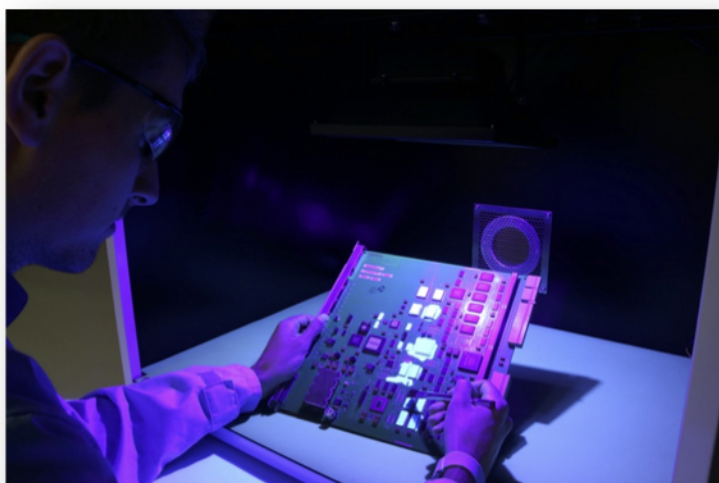
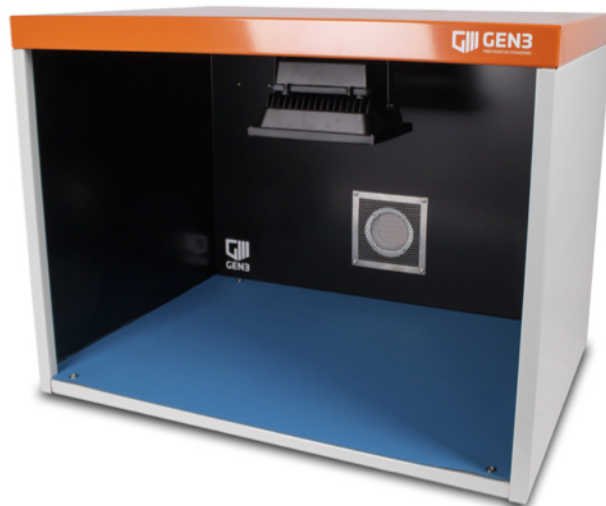
GENERAL DESCRIPTION

The UV Booth is designed to assist in the inspection of samples that require UV light to enhance discrepancies, contamination or process issues.

Used in a variety of markets, including the electronics and medical markets, the UV booth is a high quality inspection unit that provides quick and clear results for fast visual assessments.

The unit is a solid aluminium chassis coated with solvent resistant paint.

An anti-static mat complete with antistatic earthing points is supplied fitted to the work base, and an exhaust spigot is located centrally to the rear panel for connection to an external exhaust duct. The spigot measures 25 x 80 mm in diameter.



MAINTENANCE & OPERATION

After it has been connected to the mains, the lamp will start running.

DANGER: Disconnect from mains before any maintenance operation.

Frequent cleaning of the light with a soft lint-free damp cloth is recommended.

Never use alcohol on the light.

Features

- Aluminium Chassis
- Dimensions (mm): 820L x 600W x 620H
- Designed for bench top applications
- Anti static work mat fitted
- Solvent resistant protective paint
- On/Off switch with IEC connector & 2M power cord

POWER SPECIFICATIONS

- Power consumption – 30W
- Protection grade – IP65
- LED type – 30W Array
- LED Beam angle – 120°
- UV Wavelength – 390nm Peak
- Full specifications can be found on our website